

Score

# BWV 269

[Composer]

soprano

Tag:H  
Confidence:h  
Conflict?:.  
Rules:H(RQ1.1)

H  
h  
H(RL1.1)

H  
multiple  
H(RQ3.1.n)  
H(RQ3.1.p)

calto

H  
h  
H(RQ1.1)

c  
multiple  
N(RQ1.2)  
H(RQ1.1)

H  
m  
H(RQ3.1.1.p2)

tenor

H  
h  
H(RQ1.1)

c  
multiple  
N(RQ1.2)  
H(RQ1.1)

H N  
h m  
multiple  
H(RS NRS NT)  
H(RS T)

c  
multiple  
N(RQ3.6)  
H(RQ3.1.1.n2)  
H(RQ3.1.1.p1)

bass

H  
h  
H(RQ1.1)

H  
h  
H(RQ1.1)

H  
h  
H(RQ2.1.1)

c  
multiple  
N(RQ3.6)  
H(RQ3.1.1.n2)  
H(RQ3.1.1.p2)

Analysis

I  
T  
O  
GM

I  
T  
4

I  
T  
5

IV  
S  
6

VI  
S  
7

V  
D  
8

V  
D  
9

H N H H N c  
 h m h h m  
 H(RL1.1) N(RS NT) H(RL1.1) N(RS NT) multiple  
 H(RQ3.1.1.p1) H(RQ3.1.1.n2) H(RQ3.1.1.p1)

H H H N H N c  
 h H multiple multiple multiple multiple  
 H(RL1.1) H(RQ3.1.n) H(RS NT) H(RS NT) N(RQ3.6)  
 H(RQ3.1.p) H(RS T) H(RS T) H(RQ3.1.1.n2) H(RQ3.1.1.p1)

multiple multiple multiple H m  
 N(RQ1.2) H(RQ3.1.1.p2) H(RS P1.1) H(RS NT) H(RQ3.1.1.p2)  
 H(RQ1.1) H(RQ3.1.n) H(RS T)

H H H H H N H  
 h h h h m  
 H(RQ1.1) H(RQ2.1.1) multiple H(RQ1.1) multiple multiple  
 H(RQ3.1.1.p2) H(RQ3.1.n) H(RS NT) H(RQ3.1.1.p1)  
 H(RQ3.1.n) H(RS T) H(RQ3.1.n)

I I III V VI VI IV IV IV VII I I  
 T T T D T T S S S D T T  
 12 13 14 15 16 17 20 21 22 23 24 25

5



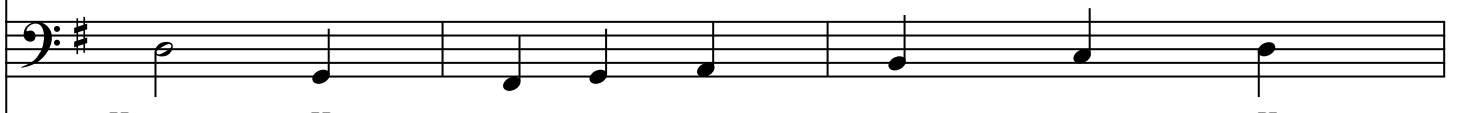
H h      H      H h      c      c      N  
 H(RL1.1)      multiple H(RQ3.1.1.p2) H(RL1.1)      multiple N(RQ3.6)      multiple bordadura o de paso N(RQ1.2) N(RL2.2)      H(RQ1.1)



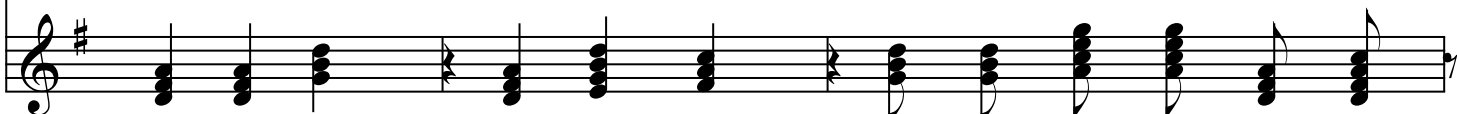
H h      H      H h      c      c      H  
 H(RL1.1)      multiple H(RQ3.1.1.p2) H(RQ1.1)      multiple N(RQ3.6)      multiple N(RL1.3)      multiple H(RQ3.1.1.p2) H(RQ3.1.n)



H h      H h      H h      c      c      H N  
 H(RL1.1)      H(RQ3.1.n)      H(RQ1.1)      multiple N(RQ3.6)      multiple N(RQ1.2)      multiple H(RS (RS INT)) H(RS T)



H h      H      c      c      c      H  
 H(RL1.1)      multiple H(RQ3.1.1.n2) H(RQ3.1.p)      multiple N(RQ1.2) H(RQ1.1)      multiple N(RQ3.6)      multiple N(RQ1.2) H(RQ1.1)      multiple H(RQ3.1.1.p2) H(RQ3.1.n)



V D 28      V D 29      I T 30      V D 32      VI T 33      VII D 34      I T 36      I T 37      II S 38      II S 39      V D 40      V D 41

8

H  
h  
H(RL1.1)

H  
h  
H(RQ1.1)

H  
h  
H(RL1.1)

H  
h  
H(RQ1.1)

H  
h  
H(RL1.1)

H  
h  
H(RQ1.1)

H  
h  
H(RL1.1)

H  
h  
H(RQ1.1)

I  
T  
44

I  
T  
45

I  
T  
48

10

11

H h  
 H(RL1.1)

N m  
 N(RS NT)

c  
 multiple  
 N(RQ3.6)  
 H(RQ3.1.1.n2)  
 H(RQ3.1.1.p1)

c  
 multiple  
 N(RL1.3)  
 H(RL1.1)

H  
 multiple  
 H(RQ3.1.1.p2)  
 H(RQ3.1.n)

c  
 multiple  
 N(RL1.3)  
 H(RS P1.1)  
 H(RS T)

N m  
 N(RS NT)

H  
 multiple  
 H(RS P1.1)  
 H(RS T)

N m  
 N(RS NT)

c  
 multiple  
 N(RQ3.6)  
 H(RQ3.1.1.n2)  
 H(RQ3.1.1.p1)

c  
 multiple  
 N(RL1.3)  
 H(RL1.1)

H m  
 H(RQ3.1.1.p2)

H  
 multiple  
 H(RQ3.1.n)  
 H(RQ3.1.p)

H h  
 H(RL1.1)

H  
 multiple  
 H(RQ3.1.1.p1)  
 H(RQ3.1.n)

H h  
 H(RL1.1)

H m  
 H(RQ3.1.1.p2)

I T 60

III T 61

I T 62

V D 63

I T 64

I T 65

V D 68

V D 69

VI T 70

13

H h  
 H(RL1.1)

c  
 multiple  
 N(RQ3.6)  
 H(RQ3.1.1.n2)  
 H(RQ3.1.1.p2)

c  
 multiple  
 N(RL1.3)  
 H(RL1.1)

c  
 multiple  
 N(RQ3.6)  
 H(RQ3.1.1.n2)  
 H(RQ3.1.1.p2)

c  
 multiple  
 N(RQ1.2)  
 H(RQ1.1)

H N H  
 m h  
 multiple  
 H(RS P R S)  
 H(RS T)

c N N  
 multiple bordadura o de paso  
 N(RQ1.2) N(RL2.2) N(RS NT)

H h  
 H(RQ1.1)

H  
 multiple  
 H(RQ2.1.2)  
 H(RQ2.1.1)

H  
 multiple  
 H(RQ3.1.1.n2)  
 H(RQ3.1.p)

H h  
 H(RL1.1)

c  
 multiple  
 N(RQ1.2)  
 H(RQ1.1)

c  
 multiple  
 N(RQ3.6)  
 H(RQ3.1.1.n2)  
 H(RQ3.1.1.p2)

H h  
 H(RL1.1)

N H  
 m multiple  
 N(RS m) N(RQ3.1.1.p1)  
 H(RQ3.1.n)

VI T 72  
 VI T 73  
 III T 74  
 I T 75  
 II S 76  
 II S 77  
 III T 80  
 III T 81  
 I T 82  
 IV S 83  
 IV S 84  
 V D 85

15

H  
h  
H(RL1.1)

H  
h  
H(RL1.1)

H  
multiple  
H(RQ3.1.n)  
H(RQ3.1.p)

c  
multiple  
N(RL1.3)  
H(RL1.1)

c  
multiple  
N(RQ3.6)  
H(RQ3.1.1.n2)  
H(RQ3.1.1.p2)

H  
h  
H(RL1.1)

H  
multiple  
H(RQ3.1.1.n2)  
H(RQ3.1.p)

c  
multiple  
N(RL1.2)  
H(RL1.1)

H  
h  
H(RL1.1)

H  
m  
H(RQ3.1.1.p2)

H N H  
multiple m h  
H(RS P N) H(RS NT) H(RQ2.1.2)  
H(RS T)

H  
multiple  
H(RQ3.1.n)  
H(RQ3.1.p)

H  
h  
H(RL1.1)

H  
multiple  
H(RQ3.1.1.n2)  
H(RQ3.1.p)

I T 88

V D 89  
CM

V D 90

V D 91

V D 92

V D 93

I T 96

I T 97

V D 98



17

The musical score for BWV 269, page 9, measures 17-22, is presented across five staves. The notation includes notes, rests, and chord symbols. The text labels below the notes provide detailed information about the notes and chords used.

**Staff 1 (Treble Clef):**

- Measure 17: H h, H(RL1.1)
- Measure 18: c, multiple N(RQ3.6), H(RQ3.1.1.n2), H(RQ3.1.1.p2)
- Measure 19: c, multiple N(RL1.3), H(RL1.1)
- Measure 20: c, multiple N(RQ3.6), H(RQ3.1.1.n2), H(RQ3.1.1.p2)

**Staff 2 (Treble Clef):**

- Measure 17: H h, H(RL1.1)
- Measure 18: N m, N(RS NT)
- Measure 19: c, multiple N(RQ3.6), H(RQ3.1.1.n2), H(RQ3.1.1.p1)
- Measure 20: c, multiple N(RL1.3), H(RL1.1)
- Measure 21: H m, H(RQ3.1.1.p2)

**Staff 3 (Treble Clef):**

- Measure 17: multiple N(RL1.3), N(RS NT), H(RS P1.1), H(RS T)
- Measure 18: c, multiple N(RQ3.6), H(RQ3.1.1.n2), H(RQ3.1.1.p2)
- Measure 19: H h, H(RL1.1)
- Measure 20: multiple N(RL1.3), N(RS NT), H(RS P1.1), H(RS T)

**Staff 4 (Bass Clef):**

- Measure 17: c, multiple N(RQ1.2), H(RQ1.1)
- Measure 18: c, multiple N(RQ3.6), H(RQ3.1.1.n2), H(RQ3.1.1.p2)
- Measure 19: H h, H(RQ1.1)
- Measure 20: H, multiple H(RQ2.1.2), H(RQ2.1.1)
- Measure 21: H, multiple H(RQ3.1.1.n1), H(RQ3.1.p)

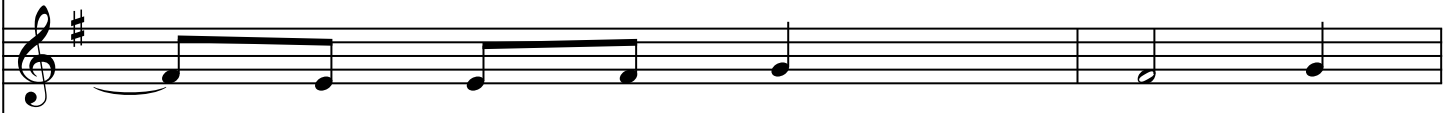
**Staff 5 (Treble Clef):**

- Measure 17: V D 100, GM
- Measure 18: V D 101
- Measure 19: I T 102
- Measure 20: I T 103
- Measure 21: VII D 104
- Measure 22: VII D 105
- Measure 23: I T 108
- Measure 24: I T 109
- Measure 25: I T 110
- Measure 26: I T 111
- Measure 27: V D 112
- Measure 28: V D 113

19



H		N		c		H		H
h		m		.		h		.
H(RL1.1)		N(RS NT)		multiple N(RQ3.6) H(RQ3.1.1.n2) H(RQ3.1.1.p1)		H(RL1.1)		multiple H(RQ3.1.1.p2) H(RQ3.1.n)



c		N		c		N		c		H		c
.		m		.		m		.		h		.
multiple N(RL1.3s) H(RS P1.1) H(RS T)		N(RS NT)		multiple N(RL1.3s) H(RS P1.1) H(RS T)		N(RS NT)		multiple N(RQ3.6) H(RQ3.1.1.n2) H(RQ3.1.1.p1)		H(RL1.1)		multiple N(RQ3.6) H(RQ3.1.1.n2) H(RQ3.1.1.p2)



c				H				H			
.				m				h			
multiple N(RQ1.2) H(RQ1.1)			H(RQ3.1.1.p2)			H(RL1.1)					



H		N		H		N		H		c		H		H
.		m		.		m		.		.		h		h
multiple H(RS P1.1) H(RS T)		N(RS NT)		multiple H(RS P1.1) H(RS T)		N(RS NT)		multiple H(RS P1.1) H(RS T)		multiple H(RS P3.1n) N(RS NT)		H(RL1.1)		H(RQ3.1.p)



VI	VI	IV	III	I	I	V	V	I
T	S	S	T	T	T	D	D	T
116	117	118	119	120	121	124	125	126

21



H  
h  
H(RL1.1)

c  
multiple  
N(RQ3.6)  
H(RQ3.1.1.n2)  
H(RQ3.1.1.p2)

c  
multiple  
N(RQ1.2)  
H(RQ1.1)

N  
I  
bordadura o de paso  
N(RL2.2)

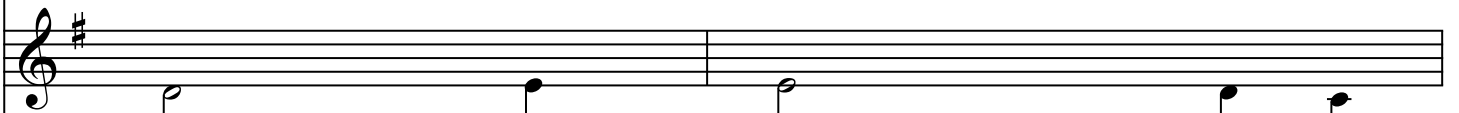


H  
h  
H(RL1.1)

H N  
m  
multiple  
H(RS(RS NT))  
H(RS T)

c  
multiple  
N(RL1.3)  
H(RL1.1)

H  
multiple  
H(RQ3.1.1.p2)  
H(RQ3.1.n)



c  
multiple  
N(RL1.2.1)  
H(RL1.1)

H  
m  
H(RQ3.1.1.p2)

H  
h  
H(RL1.1)

H N  
m  
multiple  
H(RS(RS NT))  
H(RS T)

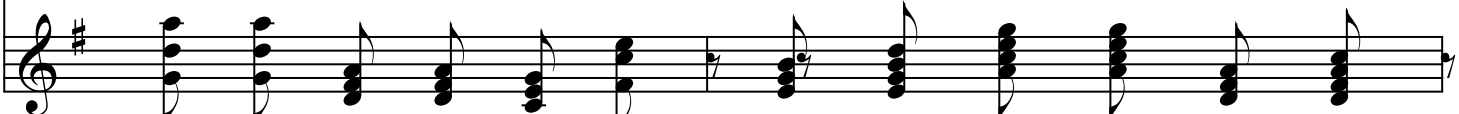


c  
multiple  
N(RQ1.2)  
H(RQ1.1)

H  
m  
H(RQ3.1.1.p2)

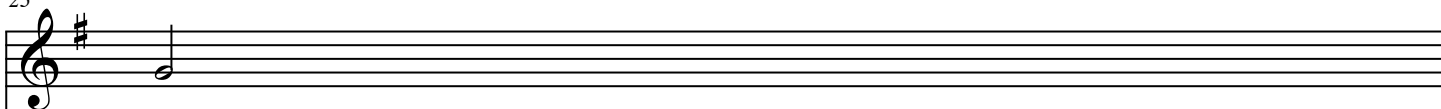
c N  
m  
multiple  
N(RL1.3sN(RS NT))  
H(RS P1.1)  
H(RS T)

H  
multiple  
H(RQ3.1.1.p2)  
H(RQ3.1.n)

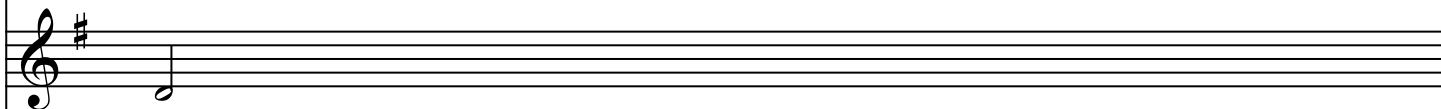


I T 128    I T 129    V D 130    V D 131    IV S 132    VII S 133    VI S 136    VI S 137    II S 138    II S 139    V D 140    V D 141

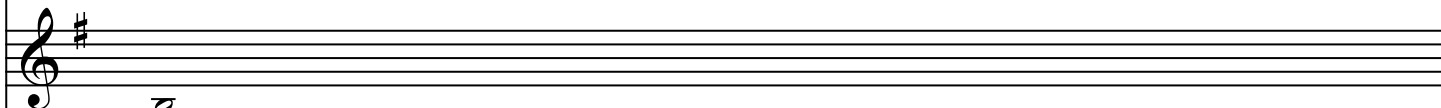
23



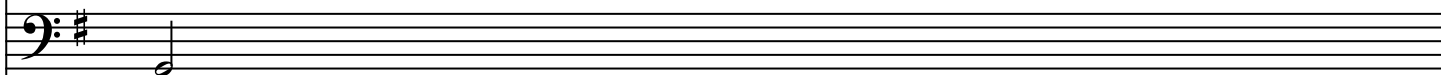
H  
h  
H(RL1.1)  
—  
—



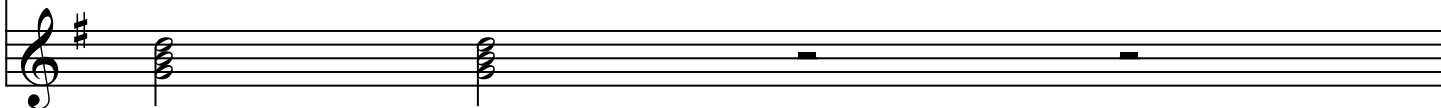
H  
h  
H(RL1.1)  
—  
—



H  
h  
H(RL1.1)  
—  
—



H  
h  
H(RL1.1)  
—  
—



I  
T  
144

I  
T  
145